

OFFERING
MEMORANDUM

Single Family Home | 2224 Salisbury Way, San Mateo, CA
Plus In-Law Unit in Fiesta Gardens, San Mateo
Price: ~~\$1,988,000~~ \$1,648,000



COMPASS
COMMERCIAL

Cameron D. Foster, SVP | 415.699.6168
cameron@camerondfoster.com
CA DRE 00972394

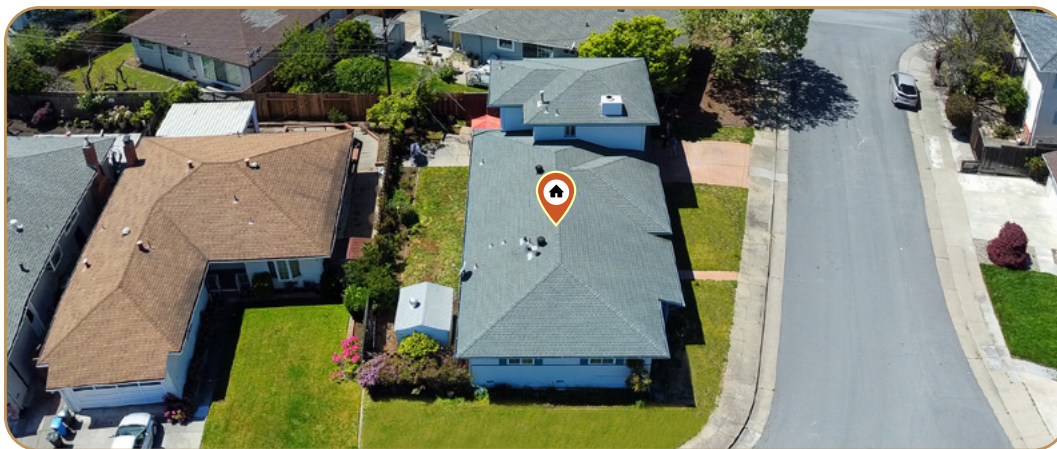
Nate Gustavason, SVP | 415.786.9410
nate.gustavason@compass.com
CA DRE 01898316

PROPERTY DETAILS

Property Address:	2224 Salisbury Way, San Mateo, CA 94903
Description:	Huge master suite + 2nd bedroom, 2 bathrooms + independent in-law unit with kitchen and bathroom
Neighborhood:	Fiesta Gardens
County:	San Mateo
APN:	040-025-010
County Use:	SFR
Price:	-\$1,988,000 \$1,648,000
Main House:	1,380 sqft*
In-Law Upstairs:	400 sqft **
Total Livable sqft:	1,780
Price/sqft:	\$926
Lot Size sqft:	5,859 Large Corner Lot
Year Built:	1956

* Per assessors records

** Buyer to verify.



PHOTOS | 2224 SALISBURY WAY | Main House

Living Room



Huge Master Bedroom Suite



Kitchen with Dining Area



Family Room or Possible 3rd Bedroom



PHOTOS | 2224 SALISBURY WAY | Main House



PHOTOS

2224 SALISBURY WAY | Independent In-Law Unit 2nd Floor



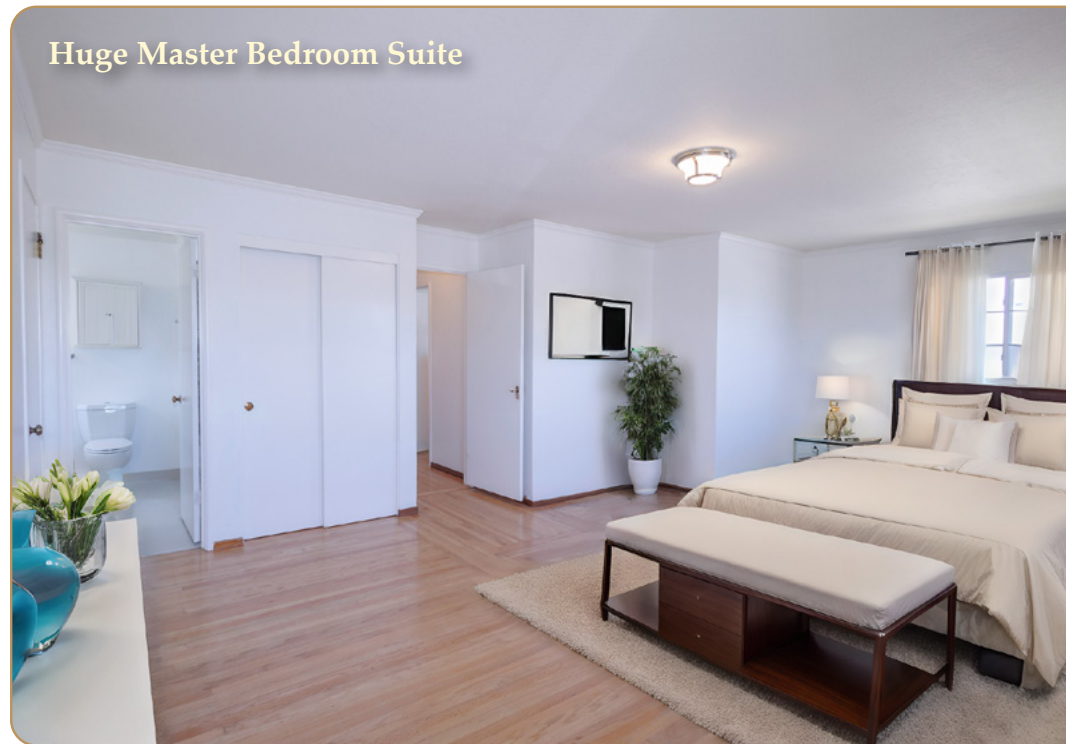
PHOTOS

2224 SALISBURY WAY

Living Room



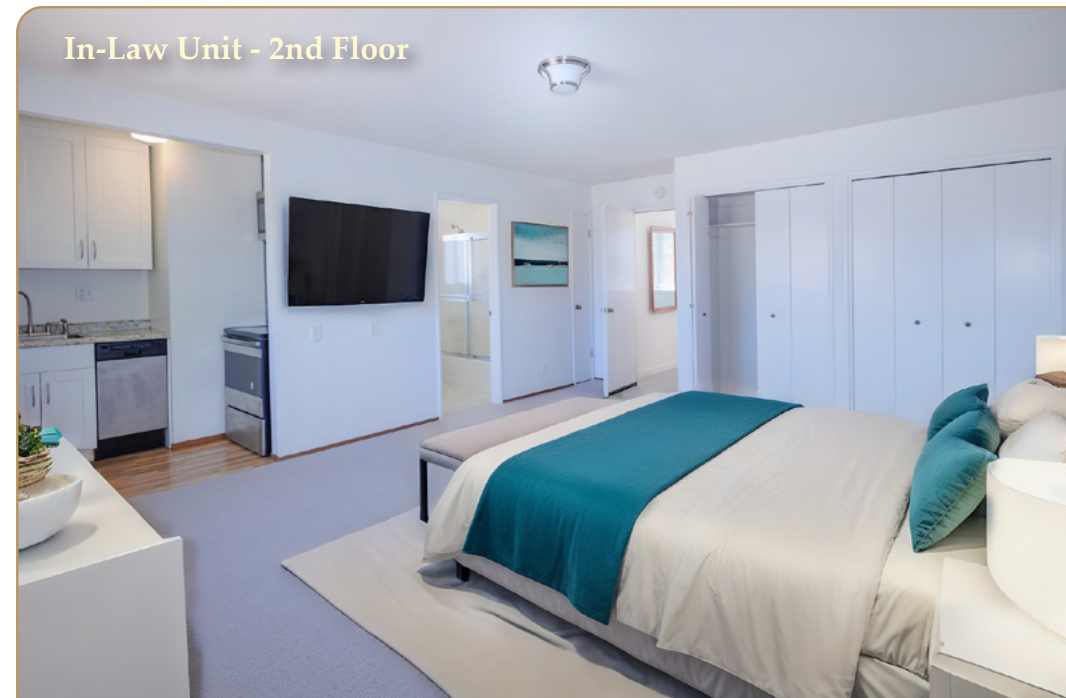
Huge Master Bedroom Suite



Kitchen with Dining Area



In-Law Unit - 2nd Floor



PHOTO

2224 SALISBURY WAY | Aerial



FIESTA GARDENS HOMES ASSOCIATION | A Place We Call Home



Fiesta Gardens is a traditional neighborhood with a strong sense of belonging. Fiesta Gardens' streets are as well-kept as its homes. The neighborhood includes Fiesta Meadows Park, a 4.8-acre, manicured outdoor space whose fields and playground are as much a neighborhood meeting place as the Homes Association's Facebook page is a neighborhood bulletin board. Besides its unique school opportunities and impactful homeowners' association, Fiesta Gardens is proximate to commuters routes, it's cradled by Highways 101 and 92 and is close to El Camino Real and is less than a mile from the Hillsdale Shopping Center. What Fiesta Gardens offers above all else, however, is a strong sense of belonging. Fiesta Gardens' children have the option to attend Fiesta Gardens Elementary School, a K-5 Magnet School whose focus is a two-way Spanish-English immersion and Global Studies. The district is served by Borel Middle School and Hillsdale High School as well.

INVESTMENT ADVISORS



Cameron D. Foster

Senior Vice President

PH: 415.699.6168

cameron@camerondfoster.com

CA DRE: 00972394



Nate Gustavson

Senior Vice President

PH: 415.786.9410

nate.gustavson@compass.com

CA DRE: 01898316

CLIENT RECOMMENDATIONS

“Cameron and Nate, We would like to sincerely thank you for your hard work on this transaction. Given the market conditions and the 1031 requirements, this transaction could have had its difficulties. However, your professionalism and expertise have made this a smooth transaction. It was a pleasure working with you all, and we very much appreciate you guys.”

– J.P. and A.P., Menlo Park

我們很慶幸可以找到Cameron跟Nathan這兩位專業地產經紀人代表我們。Cameron跟Nathan專精灣區商業地產，懂市場、會分析。在聽取我們的想法、充份了解我們的需要之後，在我們想要的地段幫我們買到了適合的出租物業。

– K.Tu, Burlingame

COMPASS
COMMERCIAL

1290 Howard Avenue • Suite 201 • Burlingame CA 94010

Compass is a real estate broker licensed by the State of California and abides by Equal Housing Opportunity laws. License Number 01527235. All material presented herein is intended for informational purposes only and is compiled from sources deemed reliable but has not been verified. Changes in price, condition, sale or withdrawal may be made without notice. No statement is made as to accuracy of any description. All measurements and square footages are approximate. This is not intended to solicit property already listed.